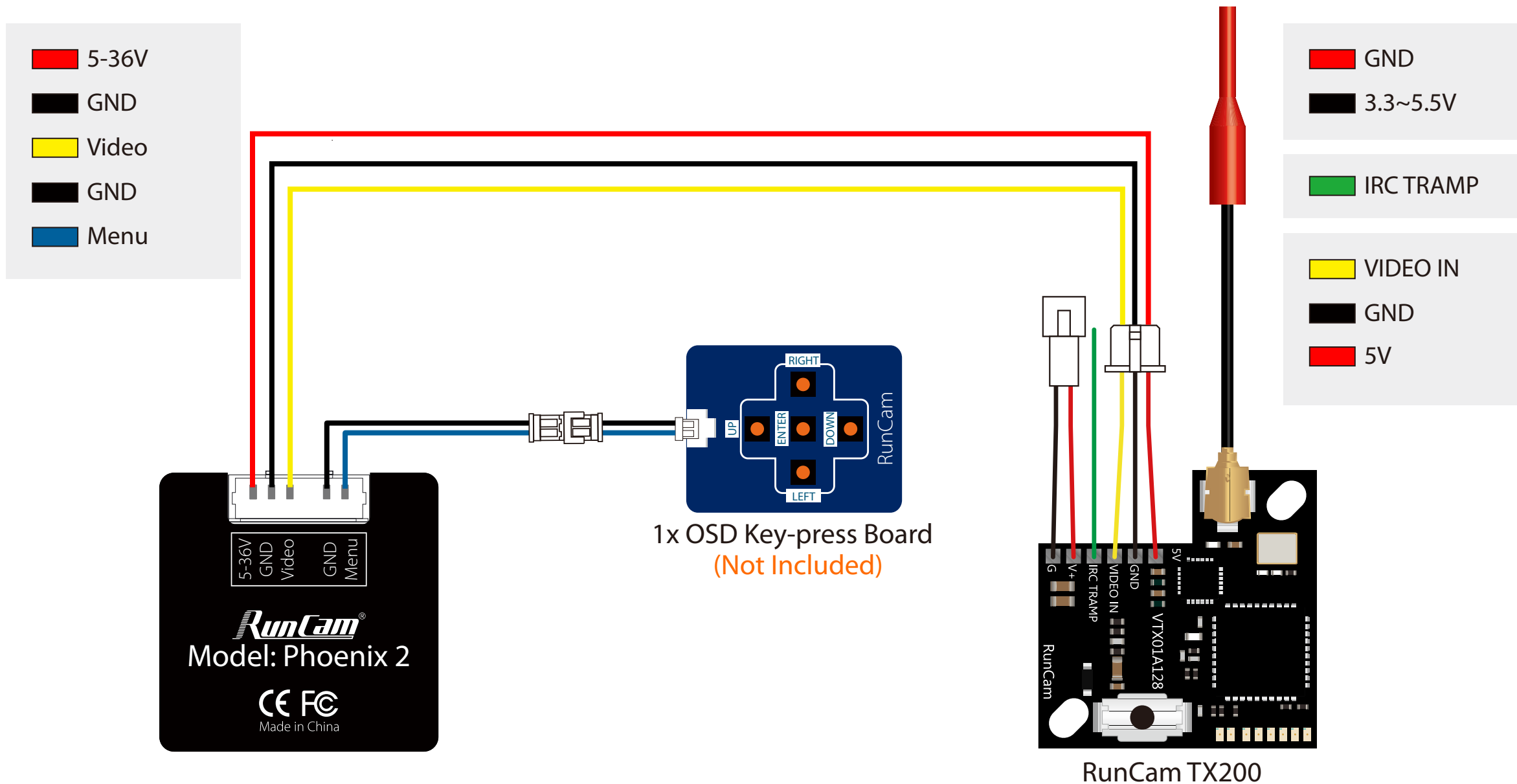


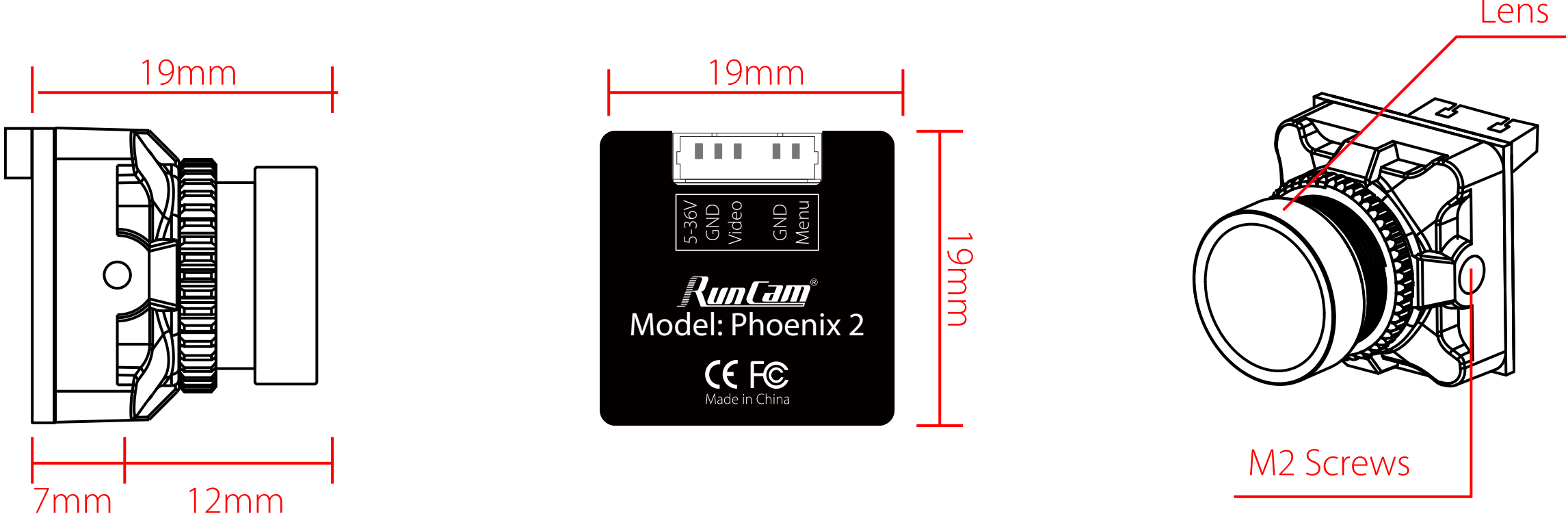
RunCam Phoenix 2

USER MANUAL

Joystick Control



Dimensions & Installation



Camera Menu

MAIN MENU	
AE	⏮
WB	⏮
DAY NIGHT	⏮
IMAGE ENHANCE	⏮
VIDEO SETTING	⏮
LANGUAGE	⏮ ENGLISH ⏭
RESET	
SAVE EXIT	
EXIT	

EXPOSURE	
BRIGHTNESS	⏮ 12 ⏭
EXPOSURE MODE	⏮ GLOBE ⏭
ADVANCED	⏮
RETURN	

- EXPOSURE MODE (GLOBE/BLC)

WB	
MODE	⏮ ATW ⏭
RETURN	

- MODE (ATW/MWB)

DAY NIGHT	
MODE	⏮ COLOR ⏭
RETURN	

- MODE (COLOR / BW / EXT / AUTO)

VIDEO SETTING	
VIDEO STANDARD	⏮ NTSC ⏭
HD FORMAT	CVBS
IMAGE RATIO	⏮ 4:3 ⏭
HORIZONTAL INVERTED	⏮ CLOSE ⏭
VERTICAL INVERTED	⏮ CLOSE ⏭
WDR	⏮ OPEN ⏭
RETURN	

- VIDEO STANDARD (NTSC/PAL)
- IMAGE RATIO (4:3 /16:9)

IMAGE ENHANCE	
CONTRAST	⏮ AUTO ⏭
SHARPNESS	⏮ AUTO ⏭
COLOR GAIN	⏮ AUTO ⏭
3DNR	⏮ AUTO ⏭
RETURN	

- CONTRAST (AUTO/MANUAL)
- SHARPNESS (AUTO/MANUAL)
- COLOR GAIN (AUTO/MANUAL)

Parameters

Model	RunCam Phoenix 2	
Image Sensor	1/2" COMS Sensor	
Horizontal Resolution	1000TVL	
Lens	2.1mm (M12) FOV155° (4:3)	
Screen Format	4:3 / 16:9 switchable	
Mirror/Flip	Available	
Signal System	PAL / NTSC Switchable	
S/N Ratio	>50dB (AGC OFF)	
Electronic Shutter Speed	Auto	
Auto Gain Control (AGC)	Auto	
Min. Illumination	0.001Lux@1.2F	
WDR	Global WDR	
Day/Night	Color/BW/EXT/Auto	
Menu Control	Cable Control	
Power	DC 5-36V	
Current	220mA@5V	120mA@12V
Housing Material	ABS	
Net Weight	9g	
Dimensions	19mm*19mm*20mm	