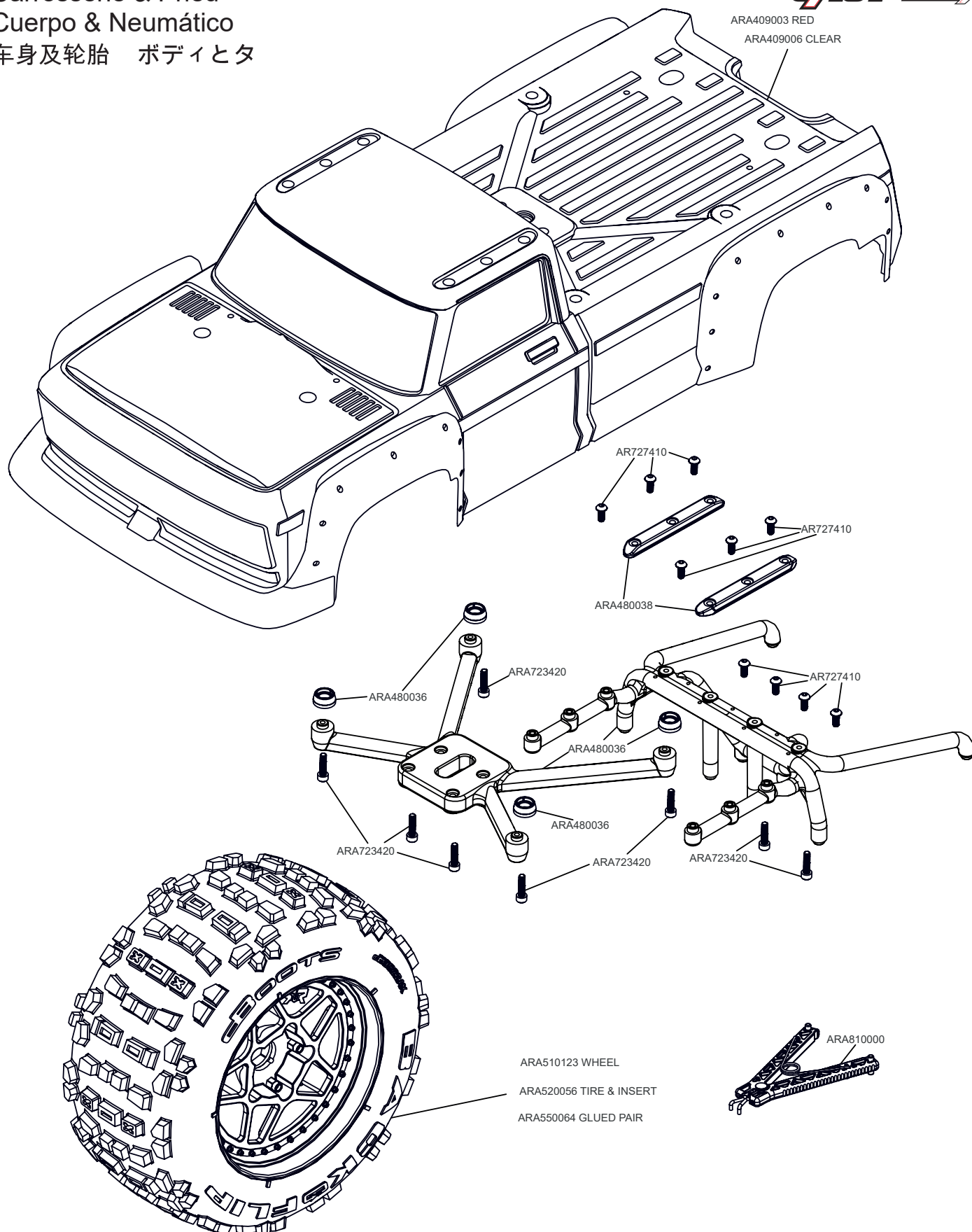


Body & Tire Karosserie & Reifen
 Carrosserie & Pneu
 Cuerpo & Neumático
 车身及轮胎 ボディとタ

OUTCAST 8S

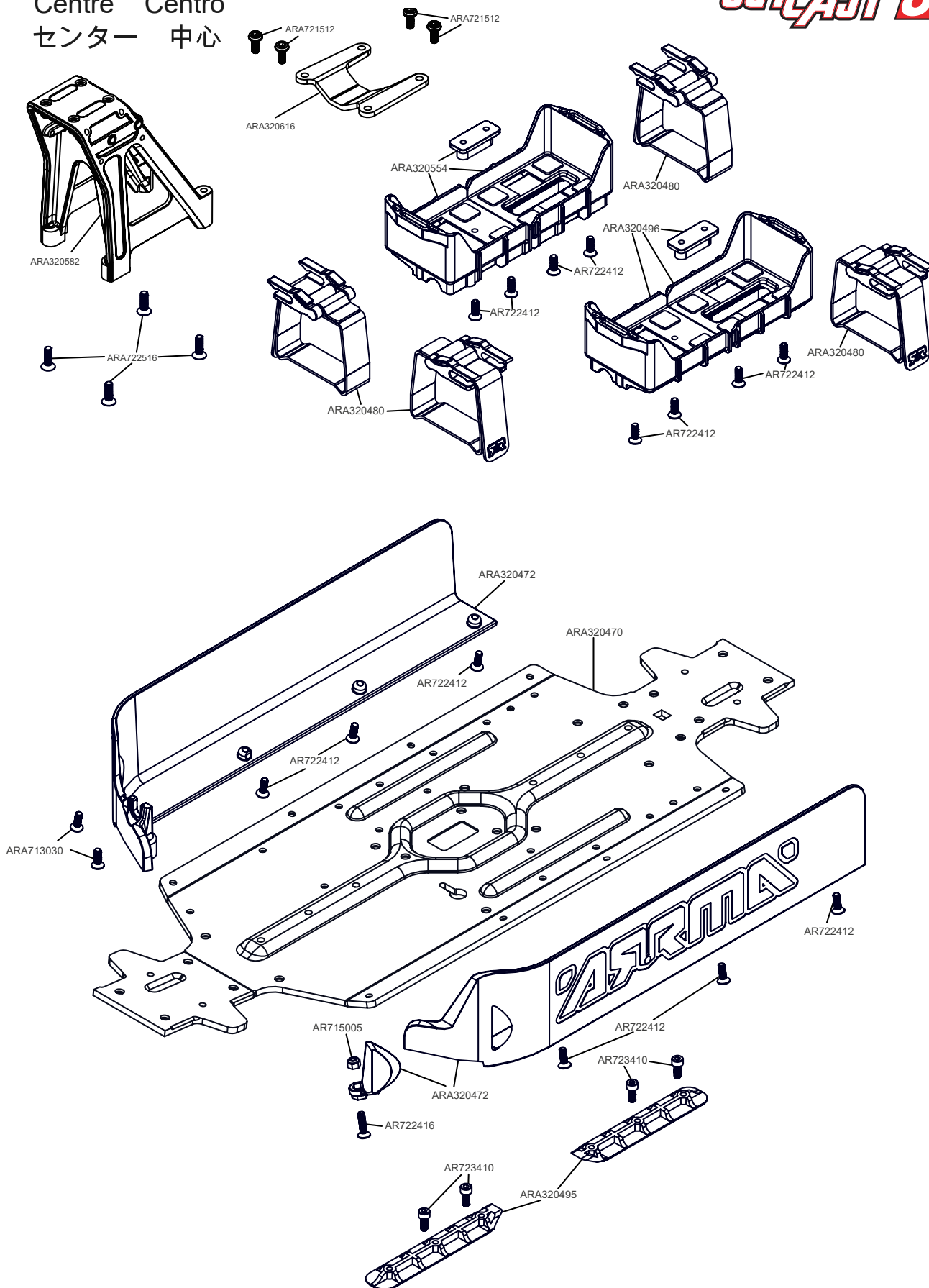


[illegible]

This exploded view diagram illustrates the assembly of a mechanical unit, likely a pump or motor. The components are organized into several functional groups:

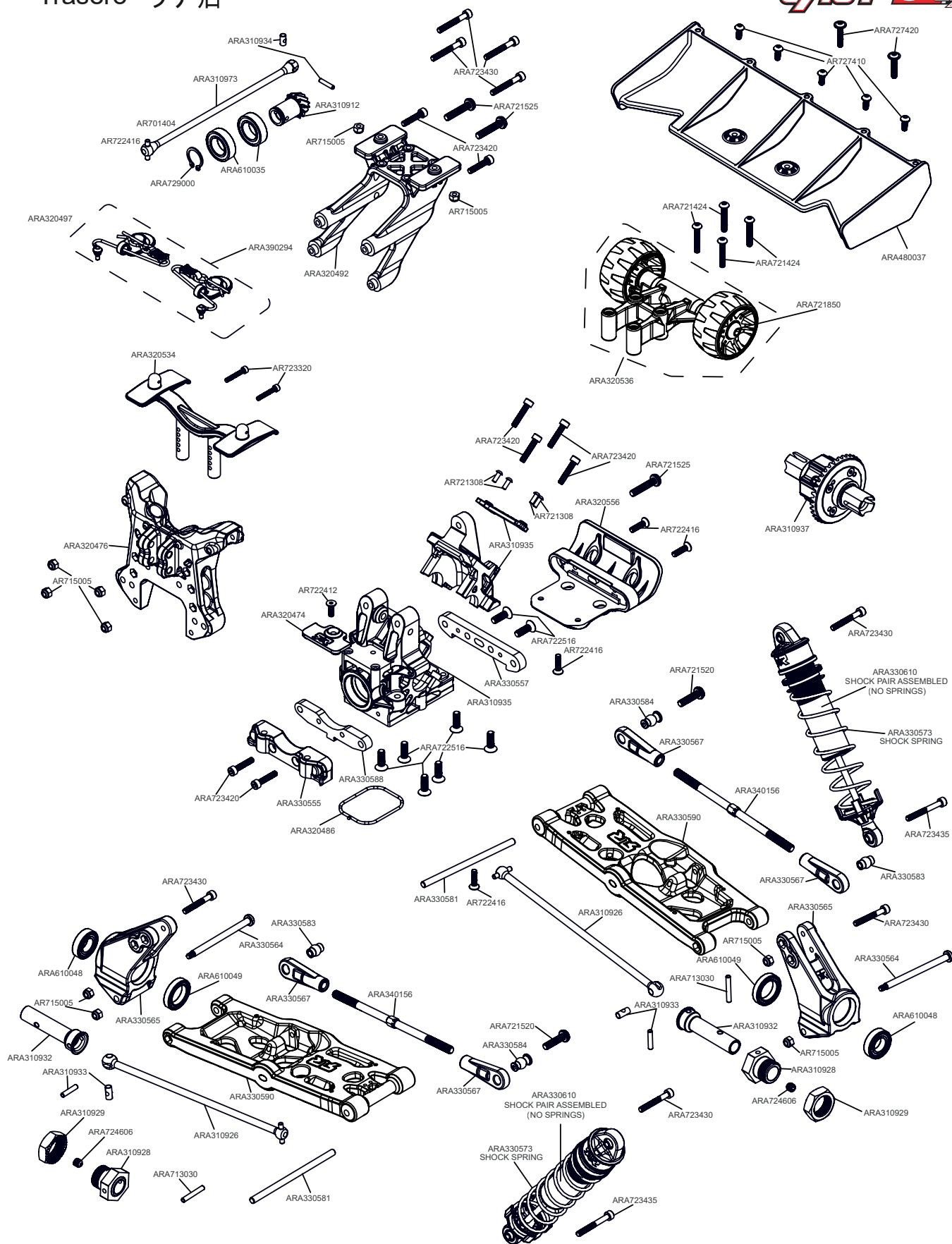
- Shaft and Coupling Components:** Located at the top, these include shafts (ARA320596, ARA320595, ARA320560, ARA320497), couplings (ARA320477), and fasteners (ARA320497).
- Motor and Housing Assembly:** The central and lower-left sections show the motor (SPMXSM1200), its housing (ARA310930), and various mounting brackets (ARA320482, ARA320486) and fasteners (ARA722416, ARA722516, ARA722412).
- Internal Drive Mechanism:** The lower-right section details the internal drive, including a motor (SPMSR6110AT), a pump head (SPMXSE1160CP), and various gears (ARA310921, ARA310920, ARA610037, ARA610047) and fasteners (ARA722310, ARA724303).
- Accessories and Fasteners:** Numerous small components are shown, including O-rings (ARA340165, ARA340166, ARA340167, ARA340168, ARA340170), springs (ARA340170), and various screws and bolts (ARA715001, ARA715002, ARA715003, ARA715004, ARA715005, ARA715006, ARA715007, ARA715008, ARA715009, ARA715010, ARA715011, ARA715012, ARA715013, ARA715014, ARA715015, ARA715016, ARA715017, ARA715018, ARA715019, ARA715020, ARA715021, ARA715022, ARA715023, ARA715024, ARA715025, ARA715026, ARA715027, ARA715028, ARA715029, ARA715030, ARA715031, ARA715032, ARA715033, ARA715034, ARA715035, ARA715036, ARA715037, ARA715038, ARA715039, ARA715040, ARA715041, ARA715042, ARA715043, ARA715044, ARA715045, ARA715046, ARA715047, ARA715048, ARA715049, ARA715050, ARA715051, ARA715052, ARA715053, ARA715054, ARA715055, ARA715056, ARA715057, ARA715058, ARA715059, ARA715060, ARA715061, ARA715062, ARA715063, ARA715064, ARA715065, ARA715066, ARA715067, ARA715068, ARA715069, ARA715070, ARA715071, ARA715072, ARA715073, ARA715074, ARA715075, ARA715076, ARA715077, ARA715078, ARA715079, ARA715080, ARA715081, ARA715082, ARA715083, ARA715084, ARA715085, ARA715086, ARA715087, ARA715088, ARA715089, ARA715090, ARA715091, ARA715092, ARA715093, ARA715094, ARA715095, ARA715096, ARA715097, ARA715098, ARA715099, ARA715100, ARA715101, ARA715102, ARA715103, ARA715104, ARA715105, ARA715106, ARA715107, ARA715108, ARA715109, ARA715110, ARA715111, ARA715112, ARA715113, ARA715114, ARA715115, ARA715116, ARA715117, ARA715118, ARA715119, ARA715120, ARA715121, ARA715122, ARA715123, ARA715124, ARA715125, ARA715126, ARA715127, ARA715128, ARA715129, ARA715130, ARA715131, ARA715132, ARA715133, ARA715134, ARA715135, ARA715136, ARA715137, ARA715138, ARA715139, ARA715140, ARA715141, ARA715142, ARA715143, ARA715144, ARA715145, ARA715146, ARA715147, ARA715148, ARA715149, ARA715150, ARA715151, ARA715152, ARA715153, ARA715154, ARA715155, ARA715156, ARA715157, ARA715158, ARA715159, ARA715160, ARA715161, ARA715162, ARA715163, ARA715164, ARA715165, ARA715166, ARA715167, ARA715168, ARA715169, ARA715170, ARA715171, ARA715172, ARA715173, ARA715174, ARA715175, ARA715176, ARA715177, ARA715178, ARA715179, ARA715180, ARA715181, ARA715182, ARA715183, ARA715184, ARA715185, ARA715186, ARA715187, ARA715188, ARA715189, ARA715190, ARA715191, ARA715192, ARA715193, ARA715194, ARA715195, ARA715196, ARA715197, ARA715198, ARA715199, ARA715200, ARA715201, ARA715202, ARA715203, ARA715204, ARA715205, ARA715206, ARA715207, ARA715208, ARA715209, ARA715210, ARA715211, ARA715212, ARA715213, ARA715214, ARA715215, ARA715216, ARA715217, ARA715218, ARA715219, ARA715220, ARA715221, ARA715222, ARA715223, ARA715224, ARA715225, ARA715226, ARA715227, ARA715228, ARA715229, ARA715230, ARA715231, ARA715232, ARA715233, ARA715234, ARA715235, ARA715236, ARA715237, ARA715238, ARA715239, ARA715240, ARA715241, ARA715242, ARA715243, ARA715244, ARA715245, ARA715246, ARA715247, ARA715248, ARA715249, ARA715250, ARA715251, ARA715252, ARA715253, ARA715254, ARA715255, ARA715256, ARA715257, ARA715258, ARA715259, ARA715260, ARA715261, ARA715262, ARA715263, ARA715264, ARA715265, ARA715266, ARA715267, ARA715268, ARA715269, ARA715270, ARA715271, ARA715272, ARA715273, ARA715274, ARA715275, ARA715276, ARA715277, ARA715278, ARA715279, ARA715280, ARA715281, ARA715282, ARA715283, ARA715284, ARA715285, ARA715286, ARA715287, ARA715288, ARA715289, ARA715290, ARA715291, ARA715292, ARA715293, ARA715294, ARA715295, ARA715296, ARA715297, ARA715298, ARA715299, ARA715300, ARA715301, ARA715302, ARA715303, ARA715304, ARA715305, ARA715306, ARA715307, ARA715308, ARA715309, ARA715310, ARA715311, ARA715312, ARA715313, ARA715314, ARA715315, ARA715316, ARA715317, ARA715318, ARA715319, ARA715320, ARA715321, ARA715322, ARA715323, ARA715324, ARA715325, ARA715326, ARA715327, ARA715328, ARA715329, ARA715330, ARA715331, ARA715332, ARA715333, ARA715334, ARA715335, ARA715336, ARA715337, ARA715338, ARA715339, ARA715340, ARA715341, ARA715342, ARA715343, ARA715344, ARA715345, ARA715346, ARA715347, ARA715348, ARA715349, ARA715350, ARA715351, ARA715352, ARA715353, ARA715354, ARA715355, ARA715356, ARA715357, ARA715358, ARA715359, ARA715360, ARA715361, ARA715362, ARA715363, ARA715364, ARA715365, ARA715366, ARA715367, ARA715368, ARA715369, ARA715370, ARA715371, ARA715372, ARA715373, ARA715374, ARA715375, ARA715376, ARA715377, ARA715378, ARA715379, ARA715380, ARA715381, ARA715382, ARA715383, ARA715384, ARA715385, ARA715386, ARA715387, ARA715388, ARA715389, ARA715390, ARA715391, ARA715392, ARA715393, ARA715394, ARA715395, ARA715396, ARA715397, ARA715398, ARA715399, ARA715400, ARA715401, ARA715402, ARA715403, ARA715404, ARA715405, ARA715406, ARA715407, ARA715408, ARA

Centre Center
Centre Centro
センター 中心

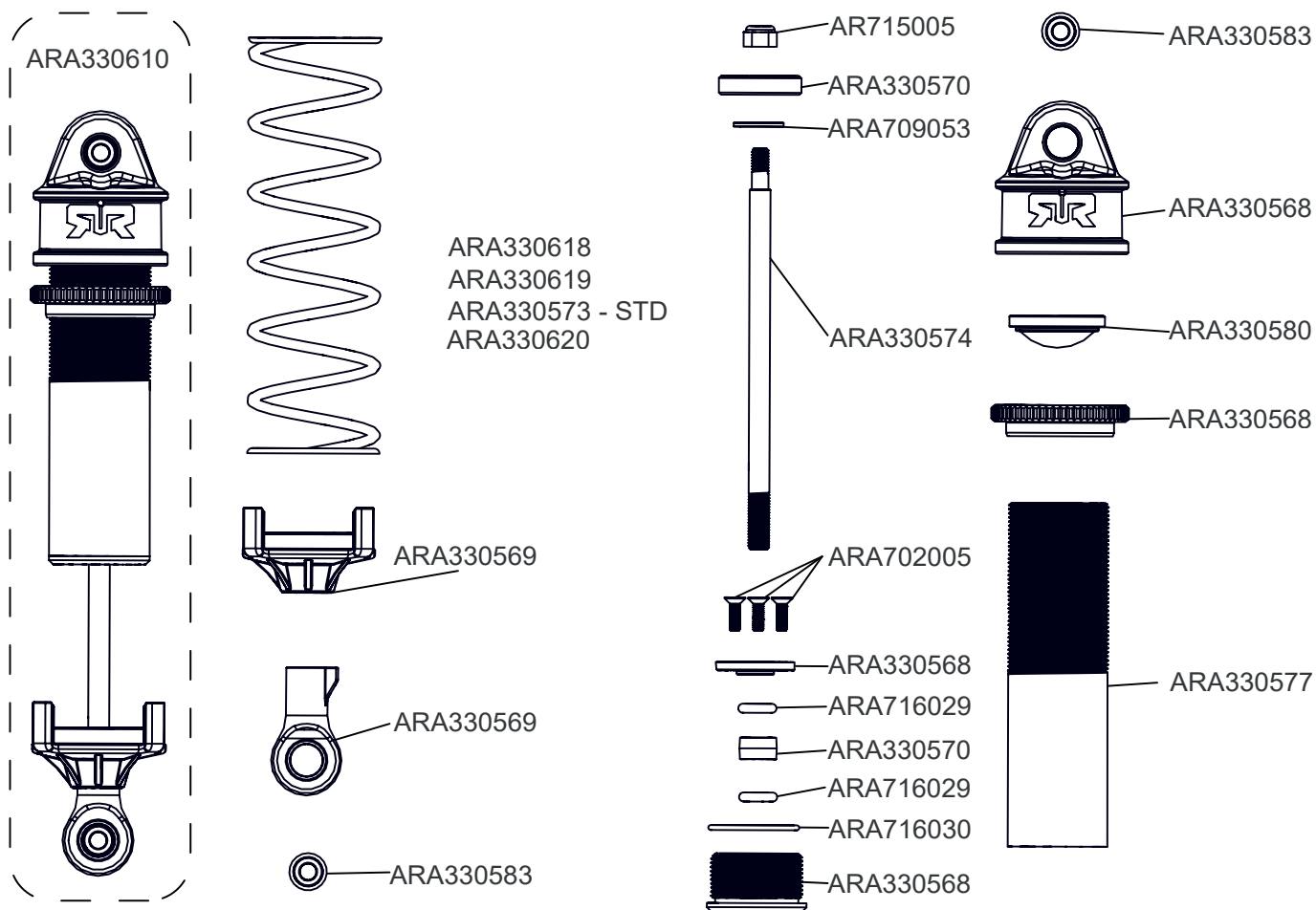


Trasero リア后

The logo for Outcast 8s BLX. The word "OUTCAST" is in a stylized, italicized, red-outlined font. To its right is a red square containing the white number "8s". Further right is the text "BLX" in a white, italicized font with a black outline.

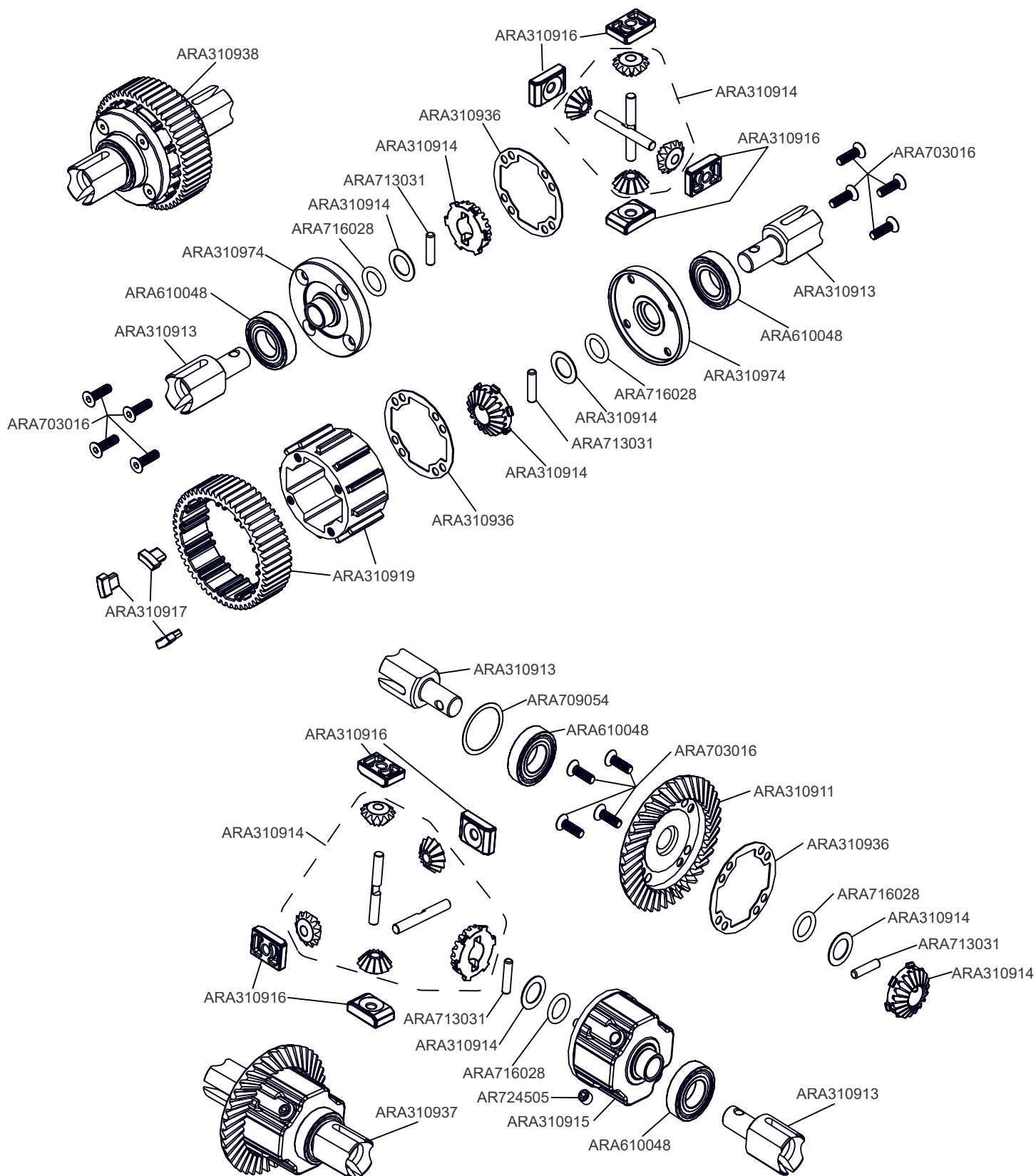


Shocks Stoßdämpfer Amortisseur
Amortiguador 減震器 ショックアブソーバ



Differential Differential Différentiel
Diferencial 差动 差動

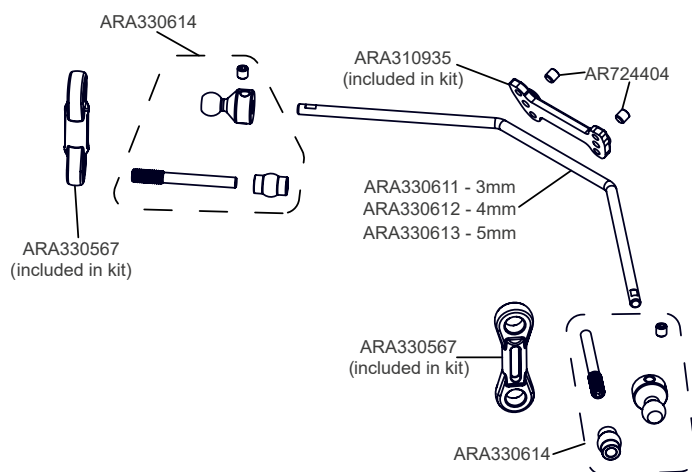
OUTCAST 8s



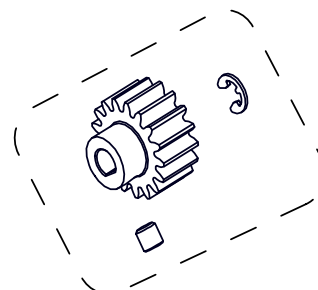
Optional



Sway Bars



Mod1 Pinions



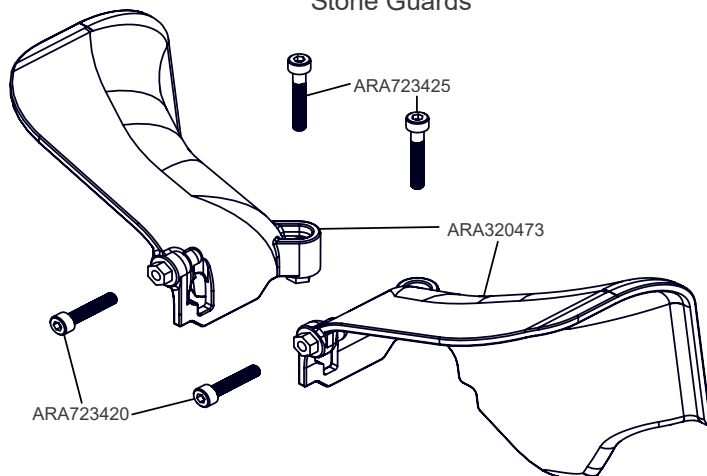
SAFE-D5
5mm Bore

ARA311052 12T
ARA311053 13T
ARA310961 14T
ARA310962 15T
ARA310963 16T
ARA310964 17T
ARA310965 18T
ARA310966 19T - STD
ARA310967 20T
ARA310968 21T
ARA310969 22T
ARA310970 23T - INC.
ARA310971 24T
ARA310972 25T
ARA311056 26T
ARA311057 27T
ARA311058 28T
ARA311059 29T
ARA311060 30T

SAFE-D8
8mm Bore

ARA311036 16T
ARA311037 17T
ARA311038 18T
ARA311039 19T
ARA311040 20T
ARA311041 21T
ARA311042 22T
ARA311043 23T
ARA311044 24T
ARA311045 25T
ARA311046 26T
ARA311047 27T
ARA311048 28T
ARA311049 29T
ARA311050 30T

Stone Guards



Servo Mount

